

FOR TAX PURPOSES ONLY

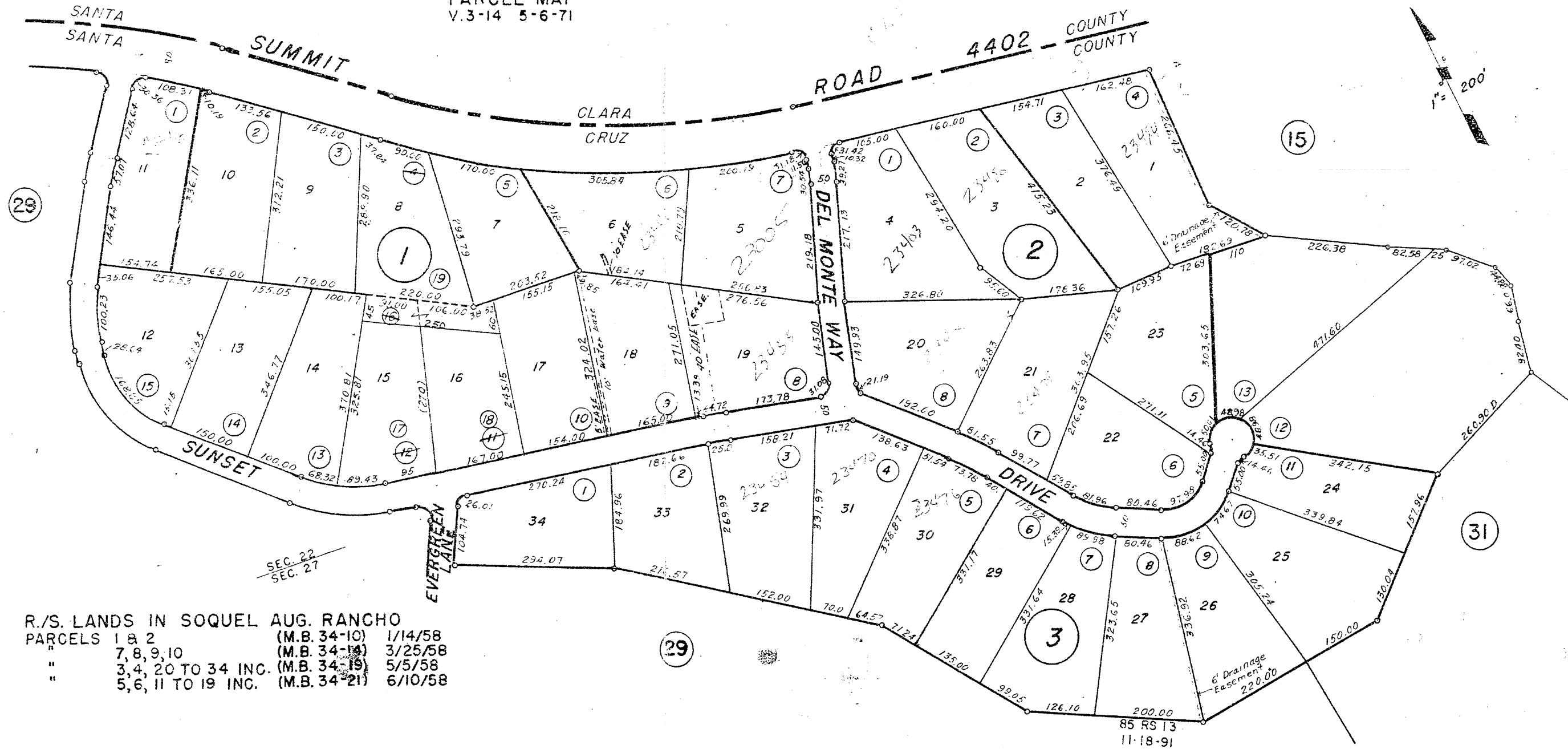
SOQUEL AUGMENTATION RANCHO  
POR. SECS. 22 & 27, T.9 S., R.1W., M.D.B.&M. PROJECTED

Tax Area Code  
79-000

96-28

(SANTA CLARA CO.)  
PARCEL MAP  
V.3-14 5-6-71

(SANTA CLARA CO.)  
PARCEL MAP  
M.B. 2-48  
3/1/71



R./S. LANDS IN SOQUEL AUG. RANCHO		
PARCELS 1 & 2	(M.B. 34-10)	1/14/58
" 7, 8, 9, 10	(M.B. 34-14)	3/25/58
" 3, 4, 20 TO 34 INC.	(M.B. 34-19)	5/5/58
" 5, 6, 11 TO 19 INC.	(M.B. 34-21)	6/10/58

Note - Assessor's Parcel Block & Lot Numbers Shown in Circles

Assessor's Map No. 96-28  
County of Santa Cruz, Calif.  
Aug. 1958

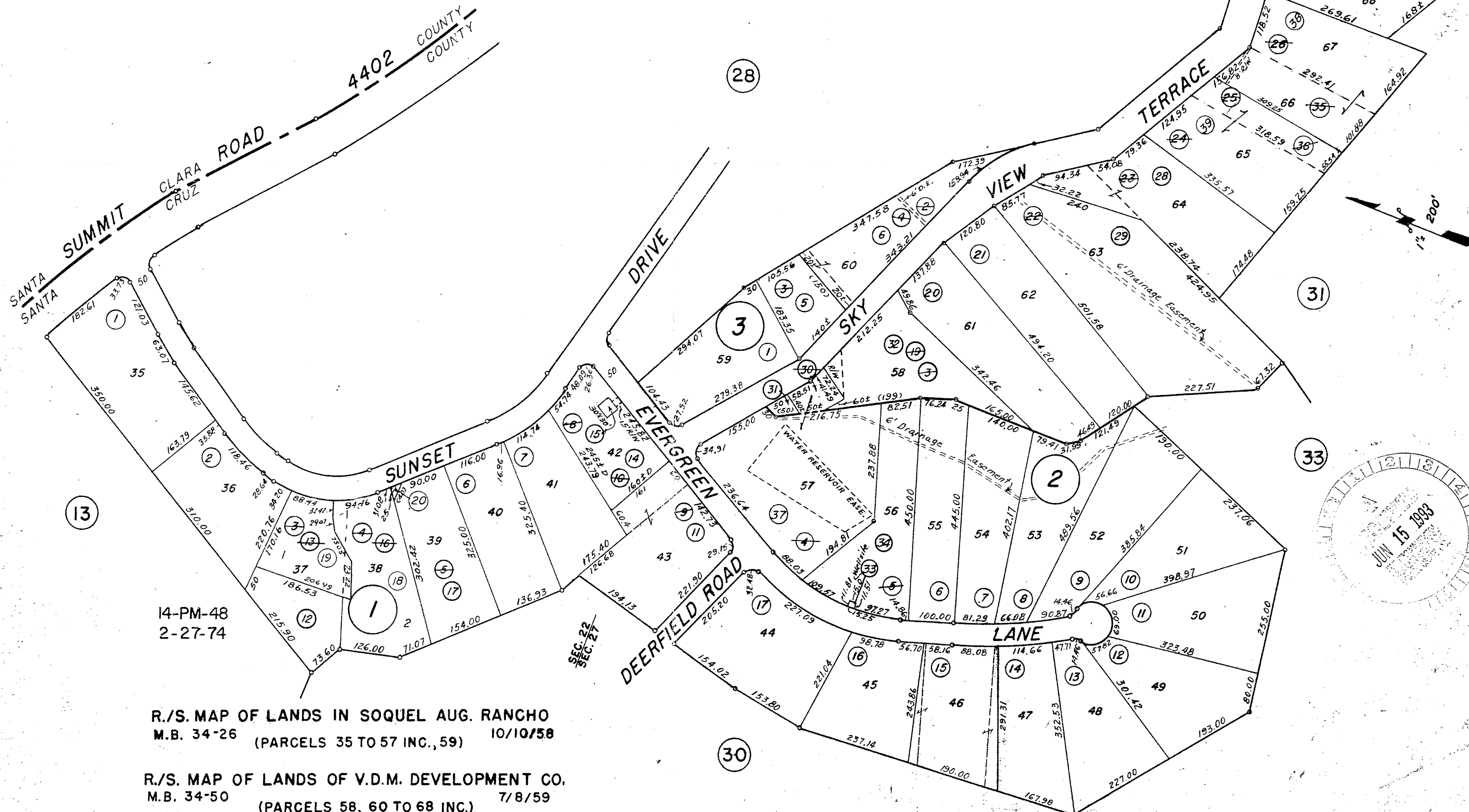
DRAWN AUGUST 1958 R.F.  
Revised Oct. 1958, R.F.  
Revised Aug. 1959, R.F.  
Revised Jan. 1960, R.F.  
Rev. 1-20-69 J.M.  
Rev. 6-2-71 R.F.  
REV. 2-8-72 D.H.  
REV. 8-2-77, D.H.  
Rev. 1/30/92 CB (85 RS 13).

FOR TAX PURPOSES ONLY

SOQUEL AUGMENTATION RANCHO  
POR. SECS. 22 & 27, T.9 S., R.1W, M.D.B. & M. PROJECTED

Tax Area Code  
79-000

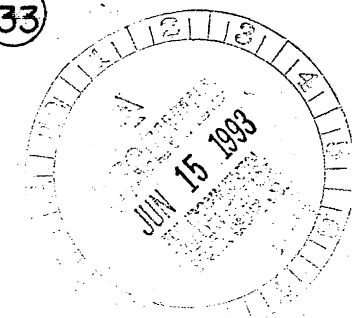
96-29



14-PM-48  
2-27-74

R./S. MAP OF LANDS IN SOQUEL AUG. RANCHO  
M.B. 34-26 (PARCELS 35 TO 57 INC., 59) 10/10/58

R./S. MAP OF LANDS OF V.D.M. DEVELOPMENT CO.  
M.B. 34-50 (PARCELS 58, 60 TO 68 INC.) 7/8/59



Note - Assessor's Parcel Block & Lot Numbers Shown in Circles

Assessor's Map No. 96-29  
County of Santa Cruz, Calif.  
July 1958

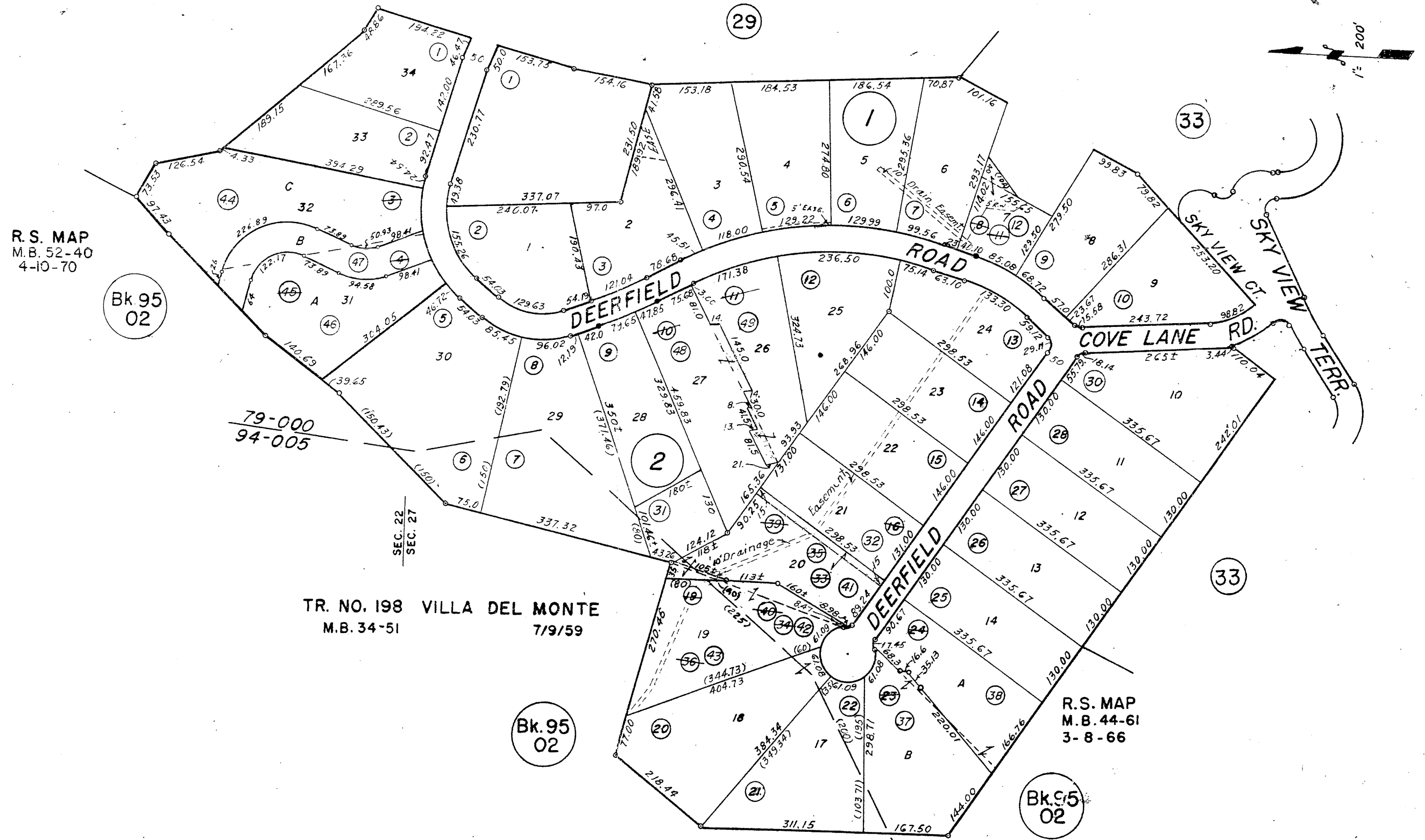
REV JULY 1967, R.S.T.  
REV. 12-10-68, J.W.  
REV. 6-17-71, R.F.  
REV. 2-8-72, D.B.  
REV. 5-17-75, F.P.  
REV. 3-27-79, F.P.  
REV. 11/13/87, K.L. (58)  
REV. 5/11/93, C.B. (528/1,4)

FOR TAX PURPOSES ONLY

SOQUEL AUGMENTATION RANCHO  
POR. SECS. 22 & 27, T.9 S., R.1W, M.D.B.&M. PROJECTED

Tax Area Code  
79-00094-005

96-30



R.S. MAP  
M.B. 52-40  
4-10-70

Bk 95  
02

79-000  
94-005

SEC. 22  
SEC. 27

TR. NO. 198 VILLA DEL MONTE  
M.B. 34-51 7/9/59

Bk. 95  
02

R.S. MAP  
M.B. 44-61  
3-8-66

Bk. 95  
02

Note - Assessor's Parcel Block &  
Lot Numbers Shown in Circles

Assessor's Map No. 96-30  
County of Santa Cruz, Calif.  
July, 1959

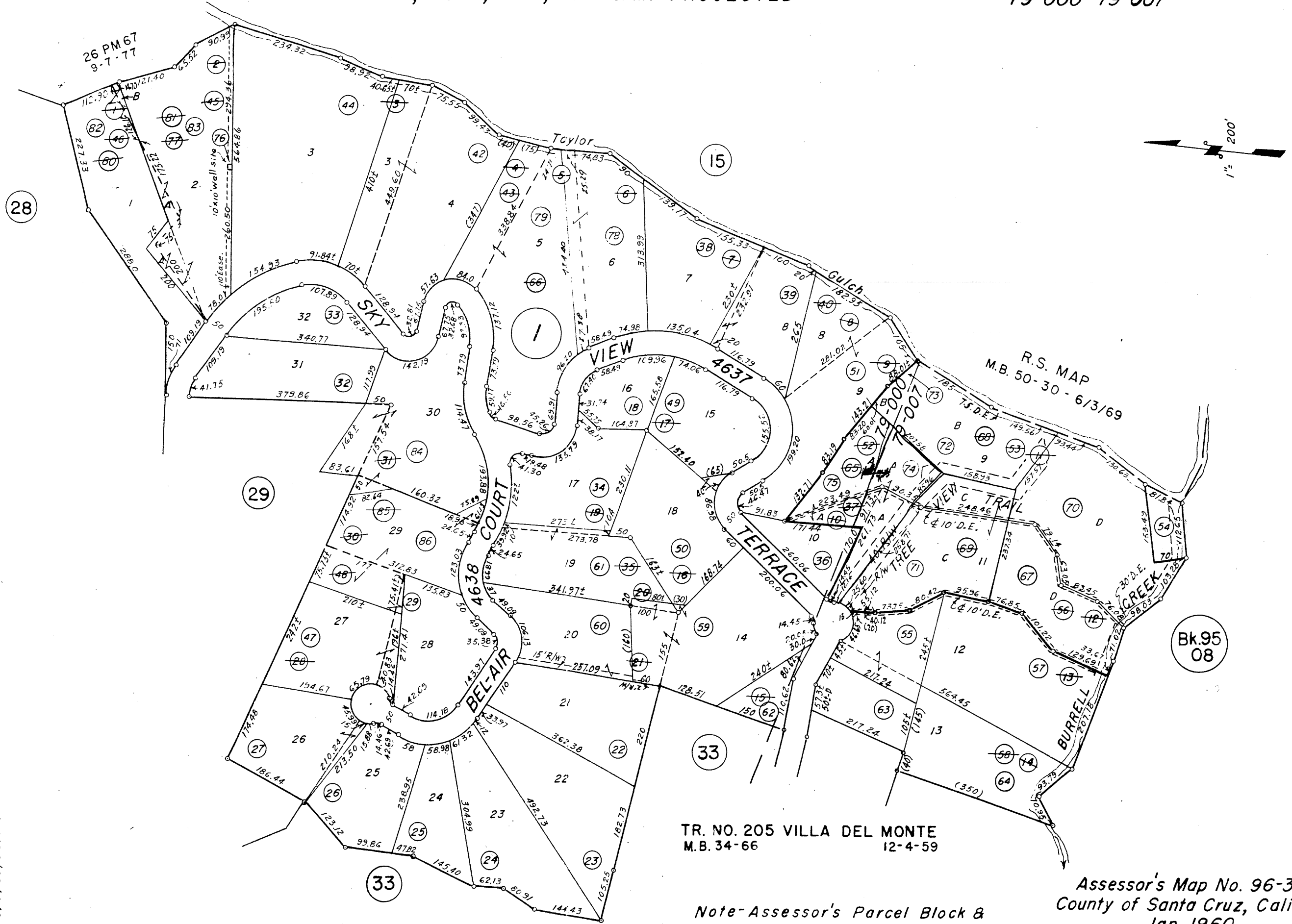
Drawn July 1959 R.F.  
Revised Dec. 1961 R.F.  
REV. JULY 67 R.S.T.  
Rev. 10/9/68 J.W.  
Rev. 4-21-70 R.F.  
Rev. 6-17-71 R.F.  
Rev. 5-29-74 R.F.  
REV. 6-25-76 R.S.T.  
Rev. 7/7/92 VL (LBA 5014-170)

FOR TAX PURPOSES ONLY

SOQUEL AUGMENTATION RANCHO  
POR. SEC. 27, T. 9 S., R. 1 W., M.D.B. & M. PROJECTED

Tax Area Code  
79-000 79-007

96-31



Drawn Jan. 1960 R.F.  
 Revised Dec. 1961 R.F.  
 Rev. Jan. '67, S.H.  
 Rev. Feb. '68  
 REV. JUNE 16'69 R.S.T.  
 REV. 4/15/70, S.H.  
 REV. 11-19-71, D.K.  
 REV. 12-2-71, D.K.  
 REV. 5-3-76 R.S.T.  
 REV. 5-5-76 A.S.T.  
 REV. 11/25/77 S.H.  
 Rev. 1/14/88 S.H.  
 Rev. 2/1/81 S.H.  
 Rev. 6/10/81 S.H.  
 Rev. 2/23/84 S.H. (G.A.)  
 Rev. 11/11/85 R.V. (OS-CR)  
 REV. 5/9/90, C.G. (Split/Combo Form) CP

TR. NO. 205 VILLA DEL MONTE  
 M.B. 34-66 12-4-59

Note-Assessor's Parcel Block & Lot Numbers Shown in Circles

Assessor's Map No. 96-31  
 County of Santa Cruz, Calif  
 Jan. 1960

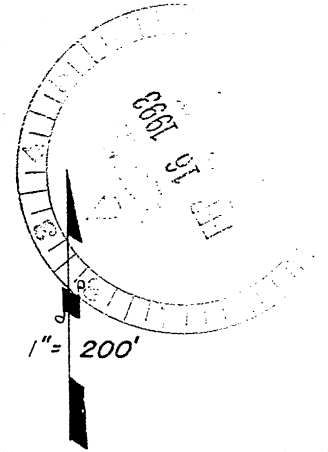
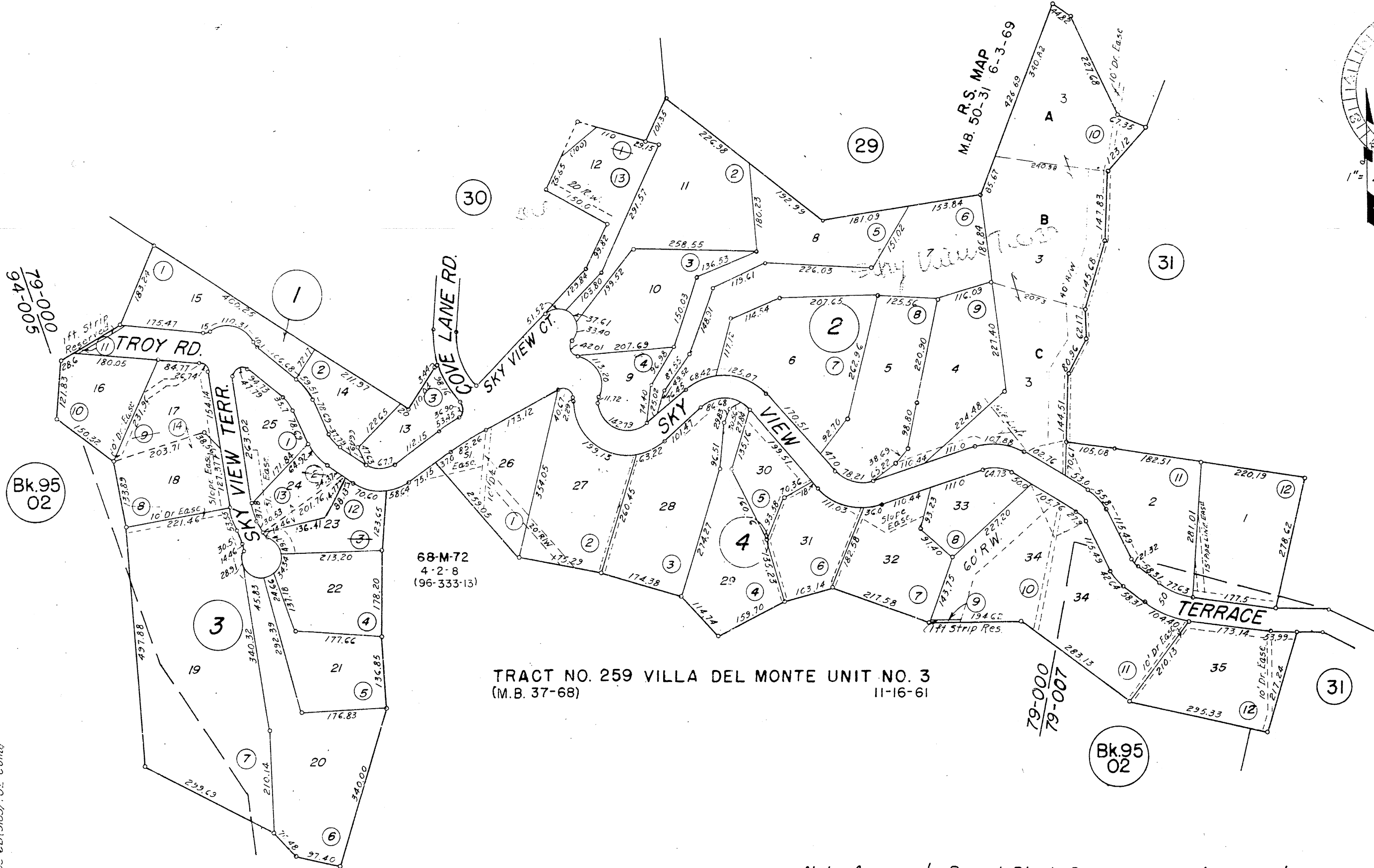
Bk.95  
08

FOR TAX PURPOSES ONLY

SOQUEL AUGMENTATION RANCHO  
POR. SEC. 27, T. 9 S., R. 1 W., M.D.B. & M. PROJECTED.

Tax Area Code  
79-000 79-007

96-33



79-000  
94-005  
Bk.95  
02

79-000  
79-007

Bk.95  
02

Note-Assessor's Parcel Block &  
Lot Numbers Shown in Circles.

Assessor's Map No. 96-33  
County of Santa Cruz, Calif.  
Dec. 1961

Drawn Dec. 1961 R.F.  
REV. 4-14-70 R.F.  
REV. 5-17-71 R.F.  
REV. 5/12/80 S.H.  
REV. 2/22/84 S.H. (C-4)  
REV. 1/19/93 CB (5165/702 Comb)